





Sustainable Soundscapes

Working with soundscapes requires careful attention, both to the interior spaces for which our products are made and to the planet, our common habitat to which we will leave our children.

This is why we work with solid, robust materials that ensure our products last a long time. To reduce our climate and environmental footprint, we prioritize using recycled and recycable materials in our products. Good design takes the long view. We collaborate with highly talented and skilled designers to achieve a lasting and meaningful design language that will age without losing meaning or relevance.

Together with the other companies within Lammhults Design Group, Abstracta operates in accordance with the principles of the UN Global Compact regarding human rights, labour law, the environment and corruption, as well as the ISO 26000 standard for social responsibility.

Abstracta Sustainability Facts

We also work in line with the UN's Sustainable Development Goals, focussing on those on which we can have the greatest impact: Goal 8 – Decent Work and Economic Growth, Goal 12 – Responsible Consumption and Production, and Goal 15 – Life on Land.

Abstracta has received ISO 14001 environmental certification, ISO 9001 quality management certification, and OHSAS 18001 occupational health and safety certification.

UPHOLSTERY - MOST COMMON

BLAZER Stock colours:



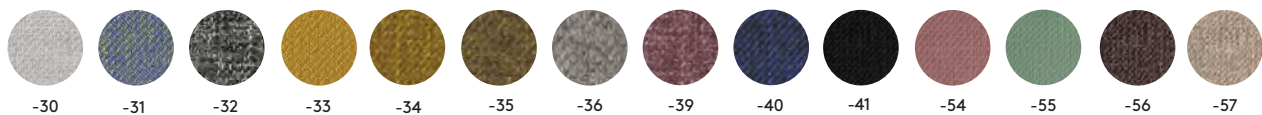
SNOW WHITE



BLAZER Non-stock colours - longer delivery time.



SALSA



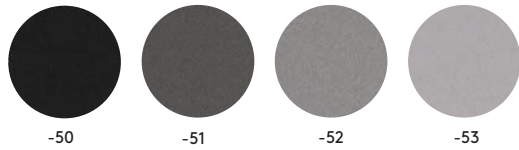
XTREME CS



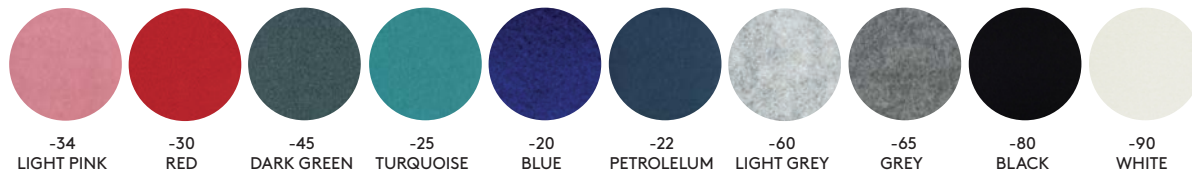
New! See each product page for compatible textiles and price range.

UPHOLSTERY -MOST COMMON

DOX Stock colours:

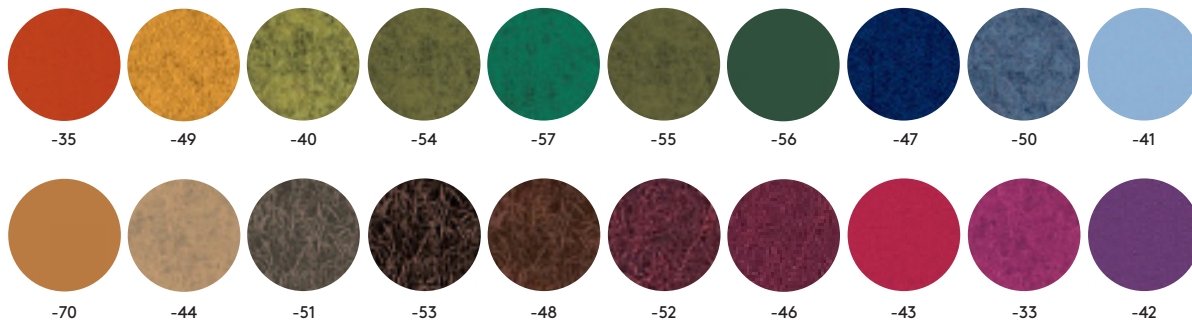


AIR FELT Stock colours:

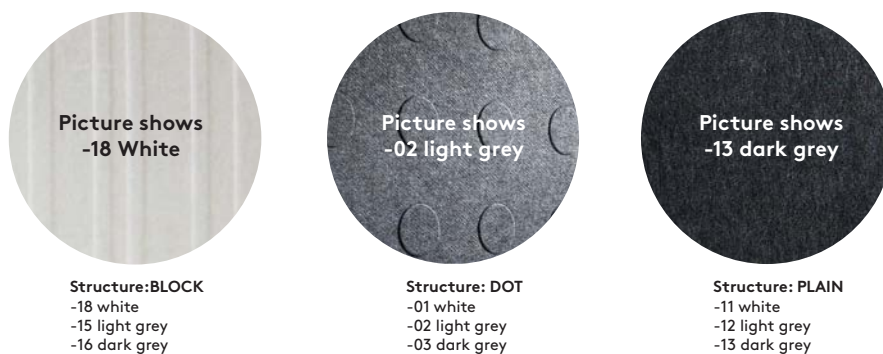


AIR FELT Non-stock colours - longer delivery time.

Minimum quantity: ARFLAKE XL in 5-pack, other AIR-Products in 10-pack.



ALUMI FELT Stock colours:



New! See each product page for compatible textiles and price range.

TEXTILES - SUPPLIERS & BRANDING

Below is a list of textile suppliers and the quality-/sustainability brands valid for the textiles we use.

Valid price for each product group is indicated on the product pages in this pricelist. For information about prices of other textiles/supplier than indicated below - please contact us!

Most of the textiles in the list below are eco-labelled with Ökotex or Ecolabel and some are extra wide matching wide floor screens with dimensions over 1200 mm. (See below colour symbol for guidance).

| SUPPLIER | TEXTILE |
|-----------------|--|
| ABSTRACTA | <div> <div>●●</div> SALSA <div>●●</div> DOX <div>●</div> SNOW WHITE <div>●</div> FELT AIR </div> <div> <div>●●</div> FELT ALUMI </div> |
| CAMIRA | <div> <div>●●</div> RACER <div>●●</div> BLAZER LITE <div>●</div> BLAZER <div>●●</div> LUCIA CS <div>●●</div> SONUS <div>●●</div> CASTILLO <div>●●</div> ERA 170 </div> <div> <div>●●</div> SYNERGY <div>●●</div> SYNERGY 170 <div>●●</div> NEXUS <div>●●</div> MAIN LINE FLAX XTREME CS </div> <div> <div>●●●</div> CARA <div>●●●</div> LUCIA <div>●●●</div> CARLOW </div> |
| ECOPHON | TEXONA |
| GABRIEL | <div> <div>●●</div> XPRESS <div>●●</div> HUSH <div>●</div> MEDLEY <div>●●●</div> EVENT SCREEN+ <div>●●●</div> MICA <div>●●●</div> JUST <div>●●●</div> TONAL </div> <div> <div>●●</div> GAJA CLASSIC <div>●●</div> STEP <div>●●</div> STEP MELANGE <div>●●</div> CRISP <div>●●</div> FAME <div>●●</div> CRISSCROSS <div>●●</div> EUROPOST </div> <div> <div>●●●</div> TWIST <div>●●●</div> TWIST MELANGE <div>●●</div> SOUL <div>●●</div> SOUL MELANGE </div> |
| KVADRAT | <div> <div>●●</div> REMIX <div>●●</div> FLOYD SCREEN <div>●●</div> DIVINA <div>●●</div> DIVINA MELANGE <div>●●</div> HERO </div> <div> <div>●●</div> GALAXY <div>●●</div> HALLINGDAL 65 <div>●●</div> STEELCUT <div>●●</div> STEELCUT TRIO <div>●●</div> FLOYD </div> |
| LUDVIG SVENSSON | <div> <div>●●</div> FRONT </div> |
| PUGI | FENICE |



MÖBELFAKTA



= Möbelfakta



= Ecolabel



= For wide floor screens >1200 mm

CARE INSTRUCTIONS

WHITEBOARDS OCH GLASSBOARDS

Remove any protective film from the writing board and thoroughly clean the surface before first use. Moderately-used writing boards should then be cleaned a couple of times a week. The board must be absolutely dry when used. Use only pens intended for whiteboards. Replace the felt on the eraser on a regular basis.

Clean as follows:

- Wipe with approved cleaning fluid intended for whiteboards.
- Then wash away residual cleaning solution with clean lukewarm water.
- Wipe dry with a cloth.
- Repeat if necessary.
- Easier soiled paintings can be cleaned with only lukewarm water.
- Wipe dry with a cloth.

Note:

Avoid detergents that are not intended for whiteboards (e.g. soap or detergent) when they can leave residues which hinder erasure.

FABRIC

To maintain the color and appearance of the fabric, the fabric should be vacuum cleaned regularly with a soft nozzle.

Stain Removal for Polyester:

- Use non-colored towel or a washcloth to suck up as much as possible of the stain. Dried stains should be vacuumed.

- Wet the stain sparingly with a white pure cotton cloth, warm water and possibly a little pH neutral cleaner.
- Press a dry cloth or colorless paper towel against the fabric so that moisture and dirt being sucked up.
- Repeat wetting and suction until the stain is gone.
- Use clean water without detergent at the final cleaning.
- Finish with suction.

Stain Removal for wool:

Dab or wipe gently with a damp cloth.

TABLE TOP SURFACE (Jetty Forbo linoleumyta)

Regular maintenance:

Wipe daily with a damp cloth and PH neutral detergent, or a mixture of water / soap or water / wax.

Stain removal:

To protect the table surface; always use underlays under cups, flower pots etc.

Remove spots as fast as possible! The surface should be cleaned with PH neutral detergent and water. In case of pigmented stains, they can be removed with turpentine or other oil-based solvent.

Note:

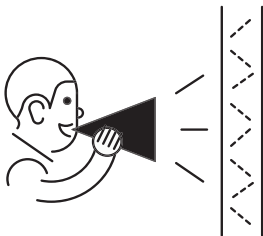
Do not use alkaline or alcohol-based cleaners!



Acoustics

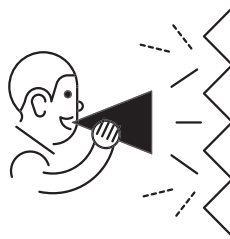
The soundscape is not visible,
but it affects us more than we think.

Three symbols to make it easier to understand how
our acoustic products affect the audio environment:



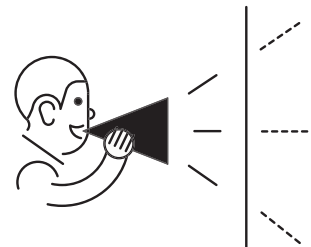
Absorption

Absorption means that the sound that hits a surface gets absorbed and transformed into heat.



Diffusion

Diffusion means that a sound hitting a surface "shatters", which helps one avoid unpleasant sound reflections , in other words echoes.



Attenuation

Attenuation means that an object shields off and lessens the sound level from one side of the object to the other.

MY HIVE

Design Poul Christiansen. Innovative MyHive stylishly integrates desktop and screen into a complete workstation. MyHive is available in either 90 or 120 degree modules in 3 versions; height adjustable table top, fixed table top (three fixed positions), or as a sofa. Concealed cable routing for a cleaner appearance, cables are kept hidden by using a smart zipper function. The body of the screen consists of a wooden frame with sound absorbing filling. Screen thickness: 50 mm. Worktop height above floor 730 mm, (Adjustable worktop: Min. 685 mm Max. 1185 mm).



MY HIVE WORKSTATION 120

120-degree tabletop or sofa integrated with the sound absorbent screens. Cables and the tabletop's height adjustment mechanism are concealed in the screen. Depth: 805 mm.



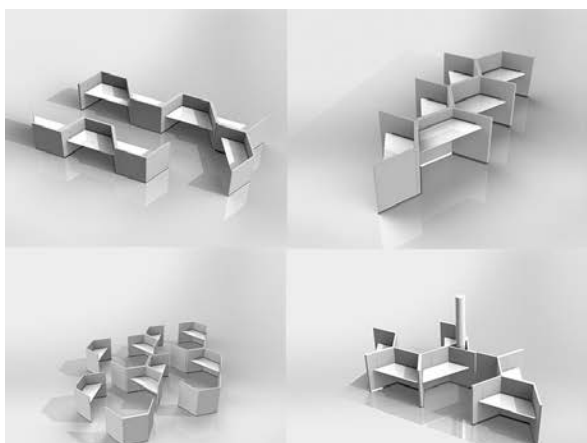
| Description wxhxd | Kg | Art no | Price A | Price B | Price C | Price D | Price E |
|--|-------|------------|---------|---------|---------|---------|---------|
| My Hive Workstation 120 g height adjustable, white top 2010x1350 | 101.8 | 112 500 00 | 3 932 | 4 373 | 4 562 | 5 504 | 6 661 |
| My Hive Workstation 120 g fixed white desk 2010x1350 | 67.0 | 112 550 00 | 2 660 | 3 101 | 3 289 | 3 934 | 4 761 |
| My Hive sofa 120 g 2010x1350 | 69.0 | 112 560 00 | 3 934 | 4 375 | 4 564 | 5 507 | 6 664 |
| My Hive sofa 120 g electric socket, left 2010x1350 | 59.0 | 112 570 00 | 4 233 | 4 674 | 4 862 | 5 807 | 7 026 |
| My Hive sofa 120 g electric socket, right 2010x1350 | 69.0 | 112 580 00 | 4 233 | 4 674 | 4 862 | 5 807 | 7 026 |

MY HIVE WORKSTATION 90

90-degree tabletop or sofa integrated with the sound-absorbent screens. Cables and the tabletop's height adjustment mechanism are concealed in the screen. Depth: 810 mm.



| Description wxhxd | Kg | Art no | Price A | Price B | Price C | Price D | Price E |
|---|-------|------------|---------|---------|---------|---------|---------|
| My Hive Workstation 90 g height adjustable, white top 1610x1350 | 107.5 | 112 520 00 | 3 934 | 4 375 | 4 564 | 5 507 | 6 664 |
| My Hive workstation 90 g fixed white desk 1610x1350 | 72.7 | 112 600 00 | 2 660 | 3 101 | 3 289 | 3 934 | 4 761 |
| My Hive sofa 90 g 1610x1350 | 82.5 | 112 610 00 | 3 934 | 4 375 | 4 564 | 5 507 | 6 664 |
| My Hive sofa 90 g electric socket, left 1610x1350 | 82.5 | 112 620 00 | 4 233 | 4 674 | 4 862 | 5 807 | 7 026 |
| My Hive sofa 90 g electric socket, right 1610x1350 | 82.5 | 112 630 00 | 4 233 | 4 674 | 4 862 | 5 807 | 7 026 |



Price A
Salsa
Dox *

Price B
Cara *
Lucia *
Xpress *
Medley
Carlow *
Event Screen +
Mica
Just
Tonal

Price C
Blazer
Blazer Lite *
Racer *
Lucia CS *
ERA
Twist *
Twist Melange *
Fenice

Price D
Synergy
Synergy 170
Nexus
Xtreme CS
Gaja
Step
Step Melange
Crisp
Fame
Floyd Screen *
Front

Price E
Crisscross
Galaxy
Floyd

* = Not compatible with the sofa unit